

# ASCELLA CT

Commercial Lighting / Batten

## ASCELLA CT-ACW435CT

### Features

- Switchable colour temperature (3000K-4000K-6500K)
- Slim and wide body models
- PMMA opalised diffuser
- Metal housing with durable power-coating
- Knockouts for in-line mounting
- Quick and easy installation

### Applications

- Hotels / Motels
- Offices
- Commercial interiors
- Showrooms, galleries
- Schools

### Options

- Microwave sensor (Motion + Daylight + ON/OFF)
- Emergency

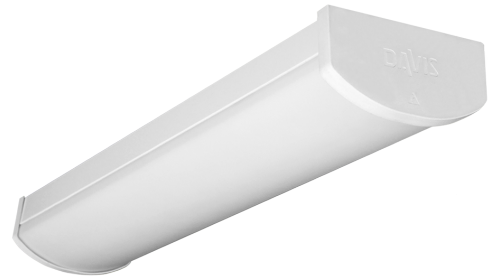
### Standards

- Manufactured under ISO 9001:2015 to standards
- IEC/AS/NZS 60598.1
- IEC/AS/NZS 60598.2.1
- IEC/AS/NZS CISPR 15

### Mounting Methods



Surface mounted



# ASCELLA CT

Commercial Lighting / Batten



## Specifications

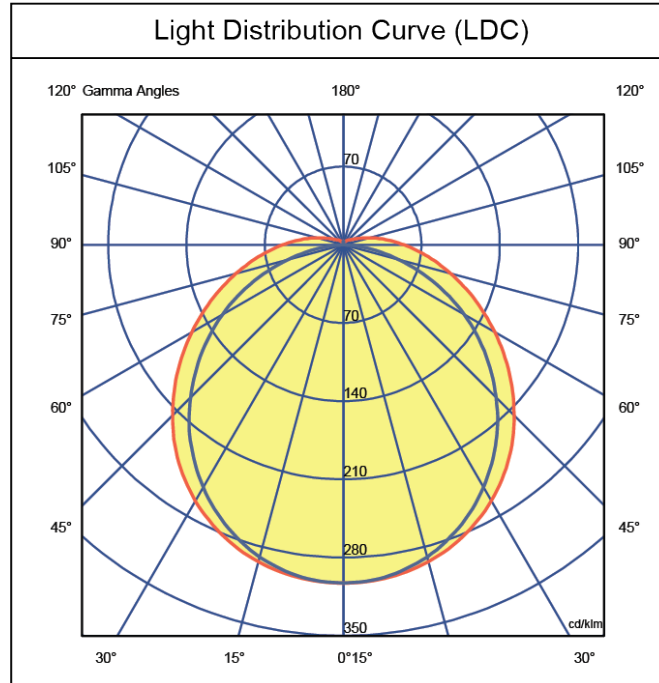
Model	ACW435CT
Nominal Power (W)	35
Input Voltage	220 - 240 VAC 50 / 60 Hz
Luminous Flux (lm)	4225
Efficacy (lm/W)	126
CRI	> 80
Power Factor	0.90
CCT (K)	3000/4000/6500
LED Life L70B50 (hr)	30000
Ambient Temp. ta (°C)	35
Weight (kg)	1.80
IK Rating	00

## Packaging Details

Model	ACW435CT
Product Carton Qty per box (pc)	1
Product Carton Dimension (mm)	1234 x 131 x 71

## Lighting Data

ACW435CT

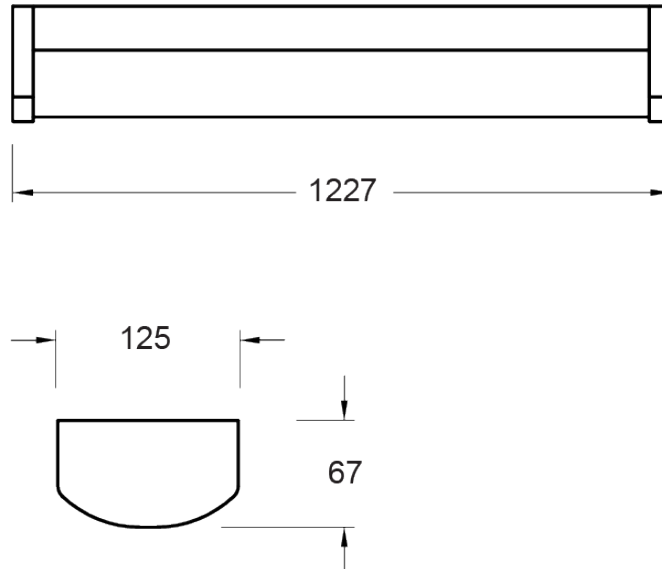


# ASCELLA CT

Commercial Lighting / Batten

## Dimensions

ACW435CT



[davislighting.com](https://davislighting.com)



[davislighting.com.au](https://davislighting.com.au)

All photometric and electrical data published are of  $\pm 10\%$  tolerance. Characteristics and specifications may change without notice. All electrical installations / connections should be carried out by a suitably qualified person. Application images are indicative only and may not contain actual Davis product. The information contained in this publication is typical and must not be interpreted as a guarantee of individual product performance.

Generated on: 21-01-2021  
Copyright © 2021 Davis Lighting. All Rights Reserved.