

## Firefly 2 LED Emergency Light

### FFRLEDBK2

- Replaceable lithium iron phosphate (LiFePO4) battery
- Recessed mount available in white and black finish
- Easy installation, flex and plug included



#### Performance

System Power	2W
Exit Lumen	174lm
CCT	6500K
CRI	80
Operating Temperature	0°C to 40°C
Ingress Protection Rating	IP20
Warranty	3 Years
Lifetime	50,000hrs (L70/B50)

#### Physical

Dimensions	L140 x W140 x H48.50mm
Luminaire Colour	Black
Weight	0.48kg
Luminaire Material	Plastic (Polycarbonate)
Driver Location	Integrated
Heatsink	Plastic (Polycarbonate)
Finish	Matt
Installation	Recessed

#### Electrical

Dimming	Non - Dimmable
Voltage	240V
Electrical Rating	Class 2

#### Emergency

Option	Standalone
Testing System	Manual
Battery	LiFePO4
Battery Voltage	6V
Battery Capacity	1200mA
Emergency Mode Wattage	2W
Emergency Mode Lumen	174lm
Classification	C0/C180 :D32 C90/C270 : D32

#### AS/NZS 2293.1:2018 Classification Table

ALLOWABLE LUMINAIRE MOUNTING HEIGHT (M)	LUMINAIRE MAXIMUM SPACING FOR EACH PLAN (M)		
	C0	C90/C270	C180
2.1	11.5	11.5	11.5
2.4	13.2	13.2	13.2
2.7	14.8	14.8	14.8
3	16.5	16.5	16.5
3.3	17.6	17.6	17.6
3.6	18	18	18
4	18.5	18.5	18.5
4.5	19	19	19
5	19.5	19.5	19.5
6	20.1	20.1	20.1

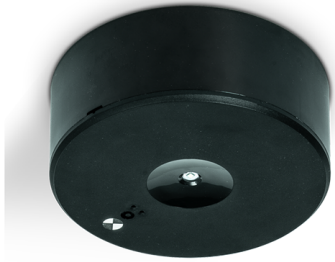
#### Product Images



Accessories

FFSLEDKITWH	SURFACE MOUNT KIT WHITE EXCLUDING FFRLED2
FFSLEDKITBK	SURFACE MOUNT KIT BLACK EXCLUDING FFRLEDBK2
BATPK1200/4L41	BATTERY PACK LIFEPO4 4CELL 6.4V 1200MAH (2P2S) SBS PCB+PLUG

Product Images



(Surface Mount Kit Sold Separately)

Accessories



FFSLEDKITWH



FFSLEDKITBK