

## LINEAR DOUBLE ENDED



- Instant illumination
- Excellent colour rendering
- Suitable for outdoor floodlighting/security lighting
- Suitable for interior floodlighting, uplighting and wallwashing
- For use in luminaires with toughened front glass

### R7s Double Ended 78

L 78  
D 10

### R7s Double Ended 118

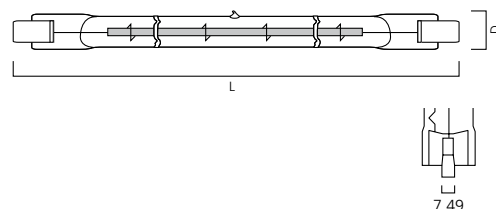
L 118  
D 8

### R7s Double Ended 189

L 189  
D 12

### R7s Double Ended 254

L 254  
D 12



## LINEAR DOUBLE ENDED

Code	Description	Watt	Volt	Cap	Colour Temp	Luminous Flux	Average Rated Life	Packing Qty.
<b>Linear Double Ended 78MM</b>								
214320	DE 240 60W	60W	240V	R7s	2800K	840 lm	2000 hrs	50
214020	DE 240 100W	100W	240V	R7s	2900K	1600 lm	2000 hrs	50
214030	DE 240 150W	150W	240V	R7s	2800K	2600 lm	2000 hrs	50
<b>Linear Double Ended 118MM</b>								
215460	DE 240 100W	100W	240V	R7s	2800K	1600 lm	2000 hrs	50
215470	DE 240 150W	150W	240V	R7s	2800K	1875 lm	2000 hrs	50
215510	DE 240 200W	200W	240V	R7s	2850K	3000 lm	2000 hrs	50
587709	DE 240 300W	300W	240V	R7s	2900K	4800 lm	2000 hrs	50
587000	DE 240 500W	500W	240V	R7s	2900K	9250 lm	2000 hrs	50
<b>Linear Double Ended 189MM</b>								
587003	DE 240 1000W	1000W	240V	R7s	3000K	22000 lm	2000 hrs	10
<b>Linear Double Ended 254MM</b>								
589480	DE 240 1000W	1000W	240V	R7s	3000K	22000 lm	2000 hrs	10
588570	DE 240 1500W	1500W	240V	R7s	3000K	33000 lm	2000 hrs	10